

MONTHLY MEMBERSHIP PROGRESS REPORT

District 14 E

Results as of: 5/31/2024

GMT:

LOCATION PENNSYLVANIA

GMT CA

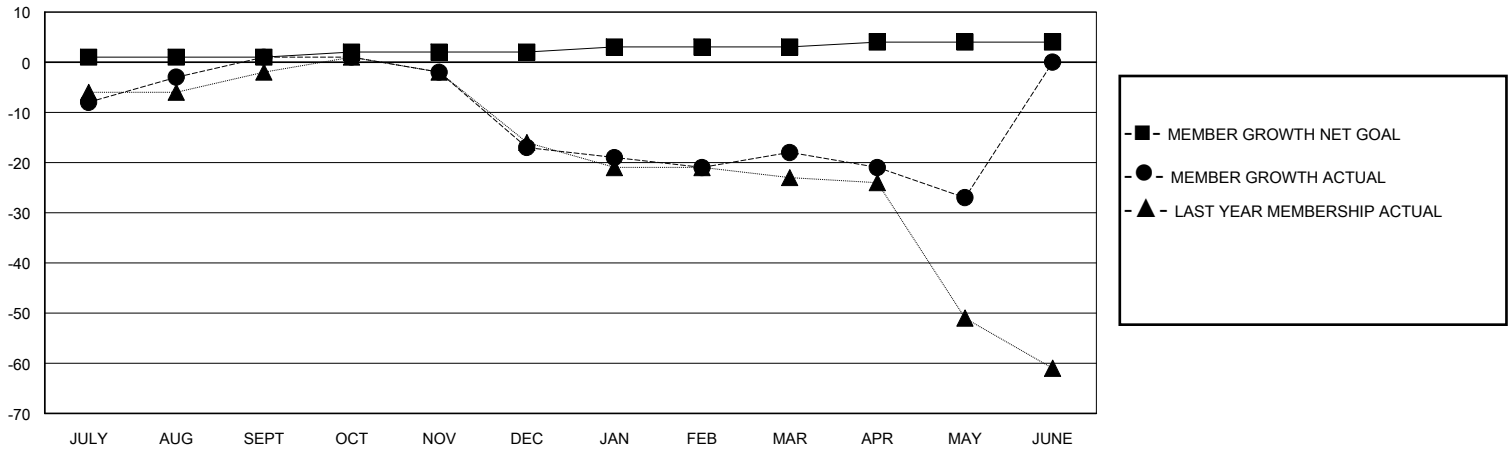
Clubs			
RESULTS FOR 2023-2024			
QUARTER	NEW CLUB GOAL	NEW CLUBS	DROPPED CLUBS
JULY/AUG/SEPT	0	0	0
OCT/NOV/DEC	0	0	1
JAN/FEB/MAR	0	0	0
APR/MAY/JUNE	1	0	0

Members			
RESULTS FOR 2023-2024			
QUARTER	MEMBER GROWTH NET GOAL	MEMBER GROWTH ACTUAL	DROPPED MEMBERS ACTUAL (including transfers)
JULY/AUG/SEPT	1	21	18
OCT/NOV/DEC	1	14	27
JAN/FEB/MAR	1	7	7
APR/MAY/JUNE	1	2	11

GOALS AND ACTUAL NEW CLUBS CUMULATIVE



GOALS AND ACTUAL MEMBERS CUMULATIVE



DROPPED CLUBS: 1	20 CLUBS OF 29 ADDED 1 OR MORE NEW MEMBERS	GENDER DISTRIBUTION MALE 474 (69.50%) FEMALE 207 (30.35%)
DROPPED MEMBERS DECEASED 22 CLUB CANCELLED 0 OTHER 41 TOTAL 63	CLICK HERE FOR CUMULATIVE MEMBERSHIP DATA	TOTAL FAMILY UNIT MEMBERS 179 FAMILY MEMBERS PAYING HALF DUES 94